

The Western Australian Rogaining Association presents the

WOTNOT WELTER

WARA Spring 24 hour Rogaine

August 9 & 10, 2003

Western Australian Rogaining Association
PO Box 1201, Subiaco, WA 6904

wa.rogaine.asn.au



SETTERS Ross Taplin
Ken Harrison

VETTERS Gordon Birch
Linda Liebenau
Robert Kettle
Mike Berry
Nancy Berry

LEGEND

Control ○ 70

Contours

Hash House △ HH

Magnetic North Line ↑

Road, Gravel ———

Track - - - - -

Watercourse

Waterdrop ○ W

SCALE 1:50,000, 5 metre contour interval

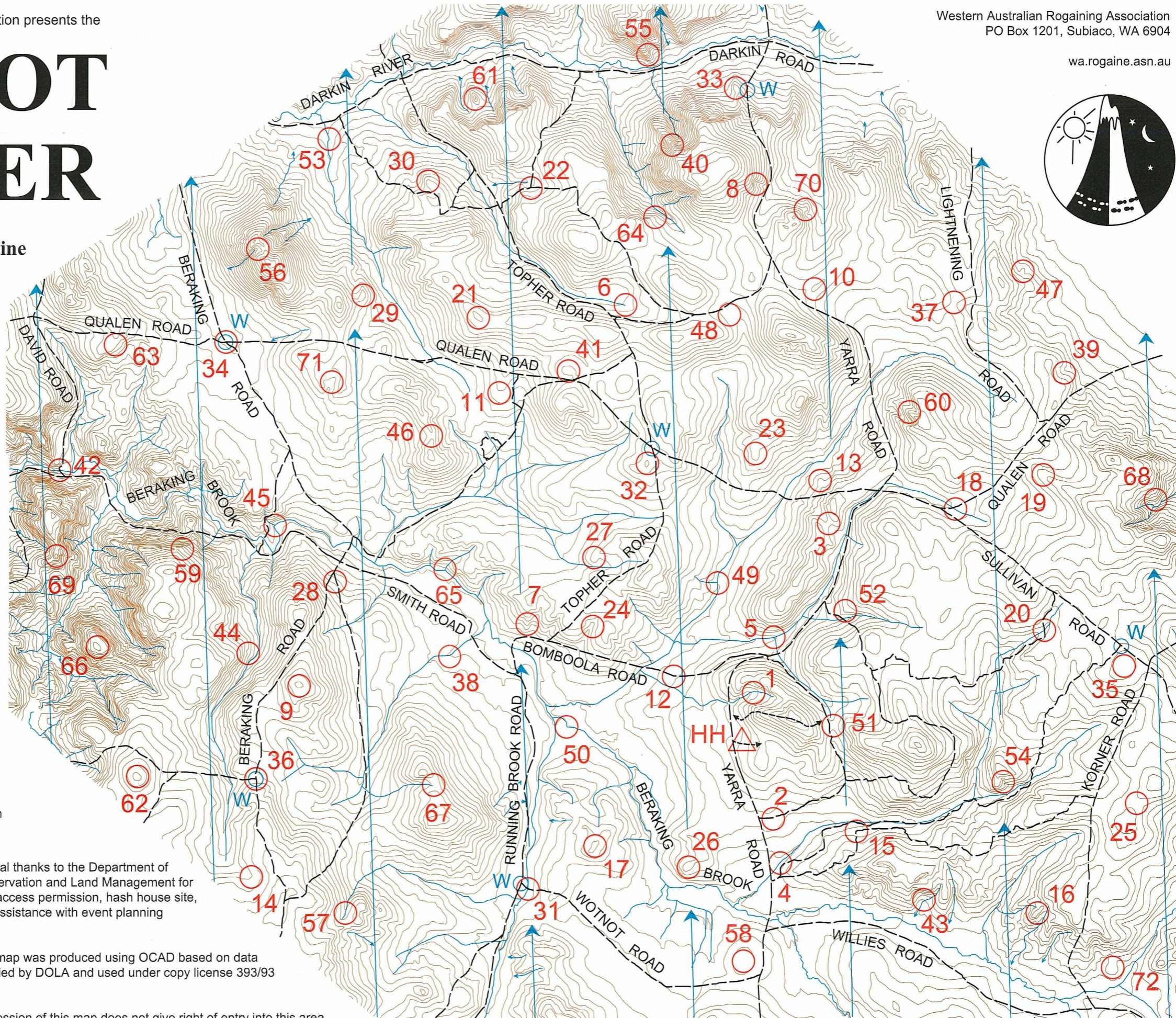
WARA receives financial support from Sport and Recreation WA.



Special thanks to the Department of Conservation and Land Management for land access permission, hash house site, and assistance with event planning

This map was produced using OCAD based on data supplied by DOLA and used under copy license 393/93

Possession of this map does not give right of entry into this area



The WOTNOT WELTER Rogaine

August 9 & 10, 2003

Control number	Description	Points	Control number	Description	Points	Important Information
1	The gully	20	37	The saddle	60	Control Cards Sat : 11.30am Briefing Sat : 11.45 am Start Sat :12.00 noon Finish Sun : 12.00 noon Hash House Opens Sat : 4.00 pm Closes Sun : 1.00 pm Sunset Sat : 5.45 pm Sunrise Sun : 6.59 pm Moonrise Sat : 2.33 pm Moonset Sun : 5.33 am Number of Controls 72 Total Points 4140
2	The track	20	38	A bend in the watercourse	60	
3	The saddle	20	39	The gully	60	
4	The watercourse	20	40	The spur	60	
5	The watercourse junction	20	41	The broad knoll	60	
6	The gully	20	42	The creek - track junction	60	
7	The spur	30	43	The bend in the watercourse	60	
8	The gully	30	44	A rocky clearing, south - west corner	60	
9	The knoll	30	45	The watercourse junction	60	
10	The broad knoll	30	46	The saddle	60	
11	The broad spur	30	47	The small rocky knoll	60	
12	The bend in the track, then 90m @ 210 deg	30	48	The broad gully	60	
13	The spur	40	49	The watercourse junction	70	
14	The broad gully	40	50	The bend in the creek	70	
15	The bend in the old track	40	51	The saddle	70	
16	The knoll	40	52	The spur	70	
17	The broad knoll	40	53	A bend in the watercourse	70	
18	The road - watercourse junction	40	54	The gully	70	
19	The spur	40	55	The spur, east side of a prominent boulder	80	
20	The watercourse - track junction	40	56	The head of the gully	80	
21	The broad knoll	40	57	The gully	80	
22	The track junction	40	58	The broad knoll	80	
23	The spur	40	59	The broad spur	80	
24	The gully	40	60	The spur, north side of a prominent boulder	80	
25	The saddle	50	61	The knoll	90	
26	The knoll	50	62	The knoll	90	
27	The spur	50	63	The spur	90	
28	A track	50	64	The broad spur	90	
29	The knoll	50	65	The watercourse junction	90	
30	The spur	50	66	The knoll	90	
31	The watercourse - track junction, WATER	50	67	The saddle	100	
32	The broad knoll, WATER	50	68	A clearing, east side	100	
33	The spur, WATER	50	69	The knoll	100	
34	The road junction, then 70m @ 40deg WATER	50	70	The spur	100	
35	The broad knoll, WATER	50	71	The gully	100	
36	The track junction, then 60m @ 90deg WATER	50	72	The broad knoll	100	

Patrols All water drops and the following roads : Yarra, Darkin, Qualen, Beraking, Running Brook, Sullivan and Bomboola